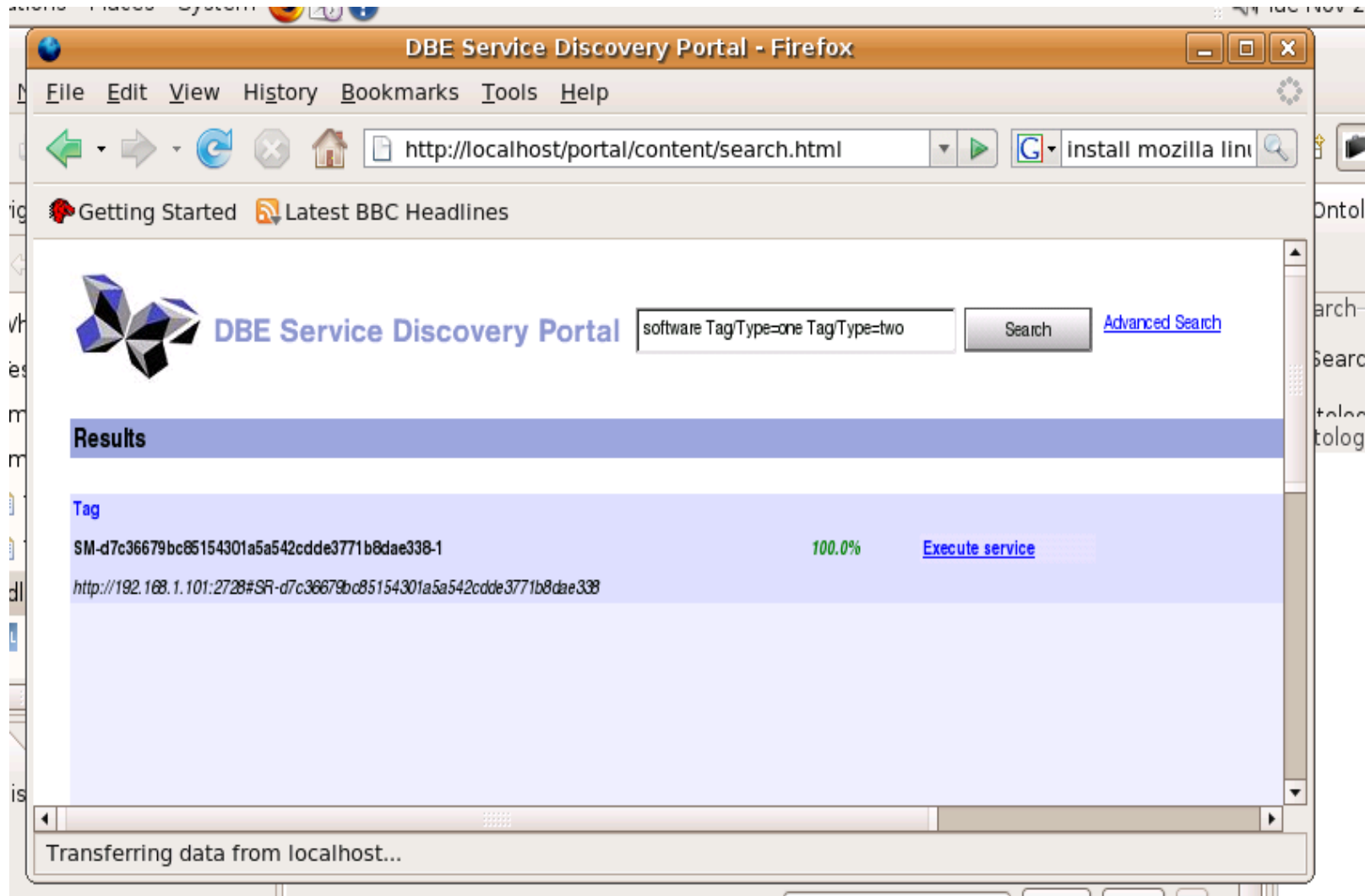


# Tagging Software Services with “Web 2.0” Style Tags

- Objectives:
  - To explain how simple use of BML concepts are similar to “Tagging” as used in the so called “Web 2.0”. However the focus of the DBE software services and not content (text, audio, video, etc)!!
  - To show the Usage of the “Duplicate” (0..N) (1..N) functionality in BMLData Editor and BML Concepts





After we “tag” the services, we can search for them using simple queries, for example:

*“software Tag/Type=one Tag/Type=two”*

The screenshot displays the DBE Business Analysis software interface. The main workspace shows a Semantic Description diagram with two classes: `<<Service Profile>> MyService` and `<<Service Parameter>> Tag`. `MyService` has a property `domain: string`. `Tag` has a property `type: string`. A relationship labeled "relation" connects them with a cardinality of 1 to 0..1.

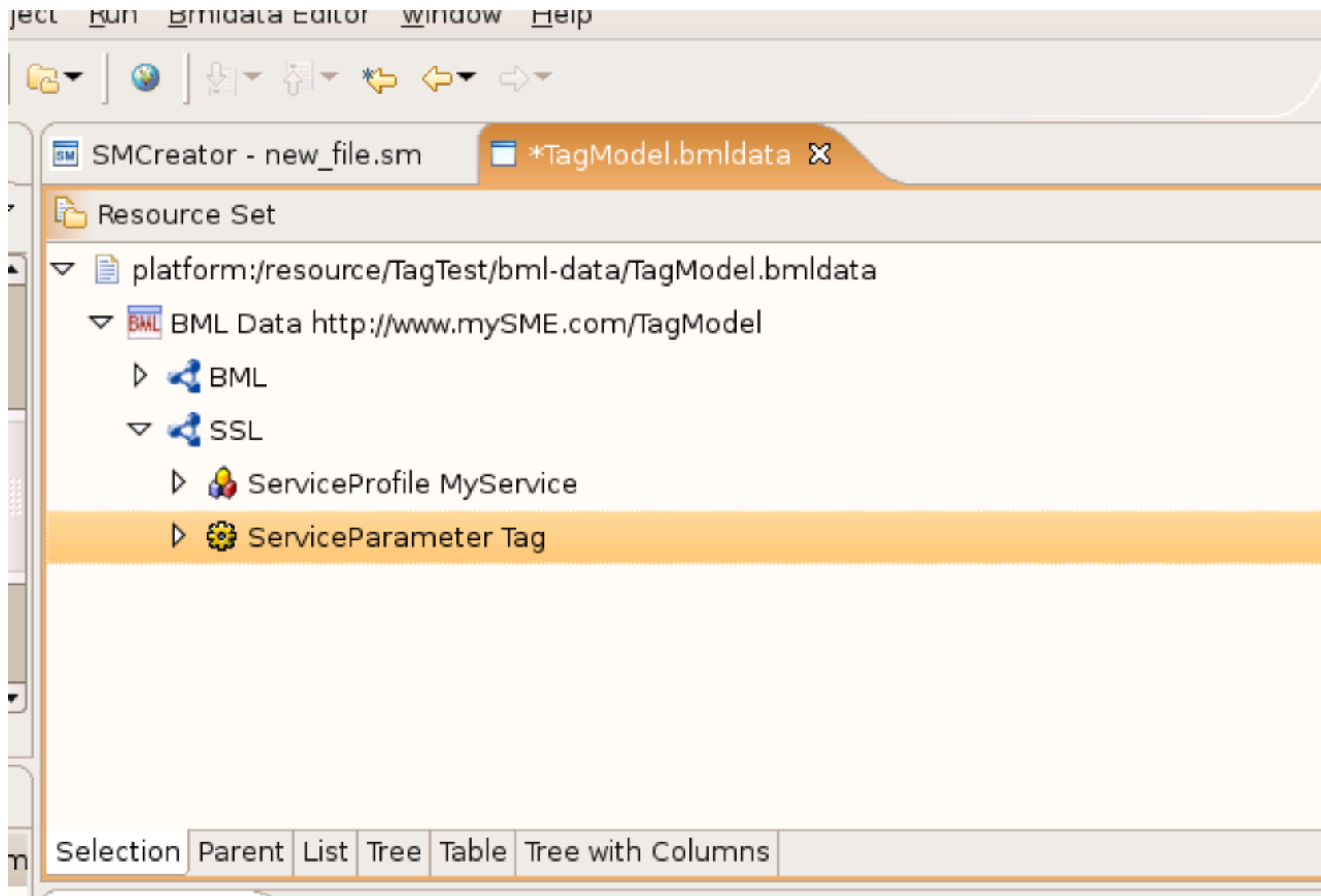
The Property View for the `Tag` class is shown below:

```

Service Parameter's Description
  General
  Profile: MyService
  Name: Tag
  
```

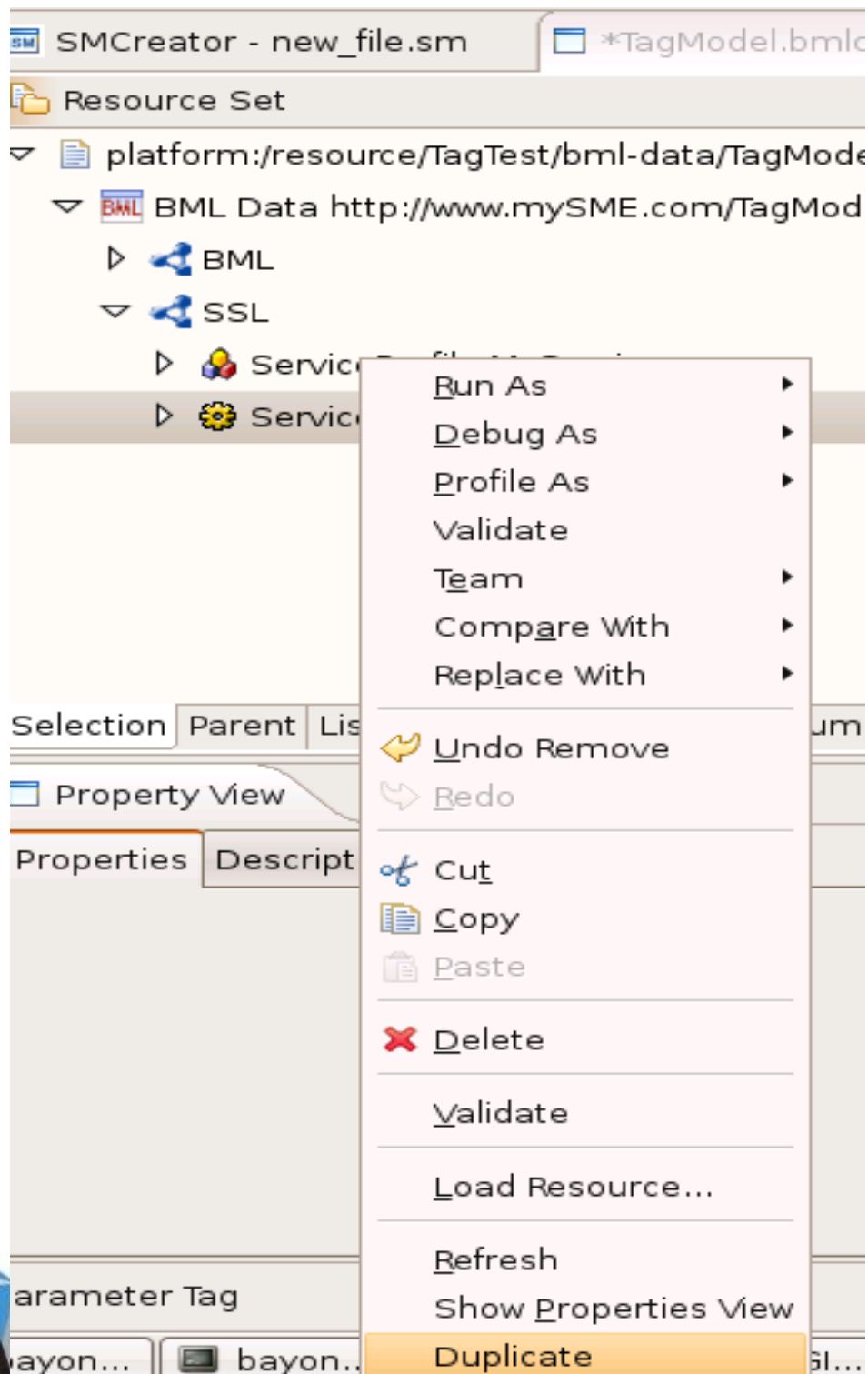
Very simple BML model, with a *ServiceParameter* “Tag” and Type as String\*.

\*ServiceParameters can only contain one Attribute, which is named by default “Type”. The name cannot be changed



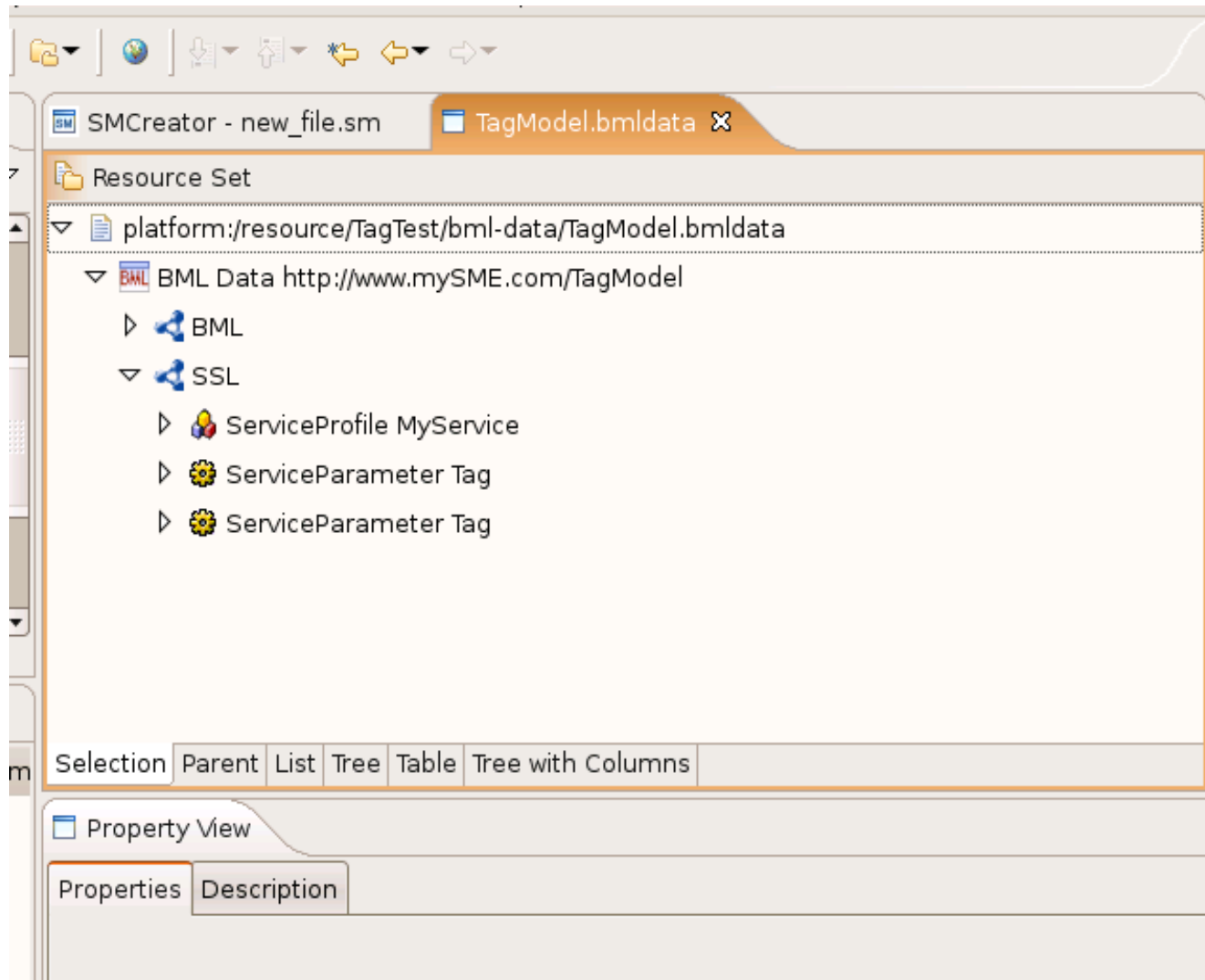
The BMLData M0 Model, showing the ServiceParameter “Tag” of the SSL Part





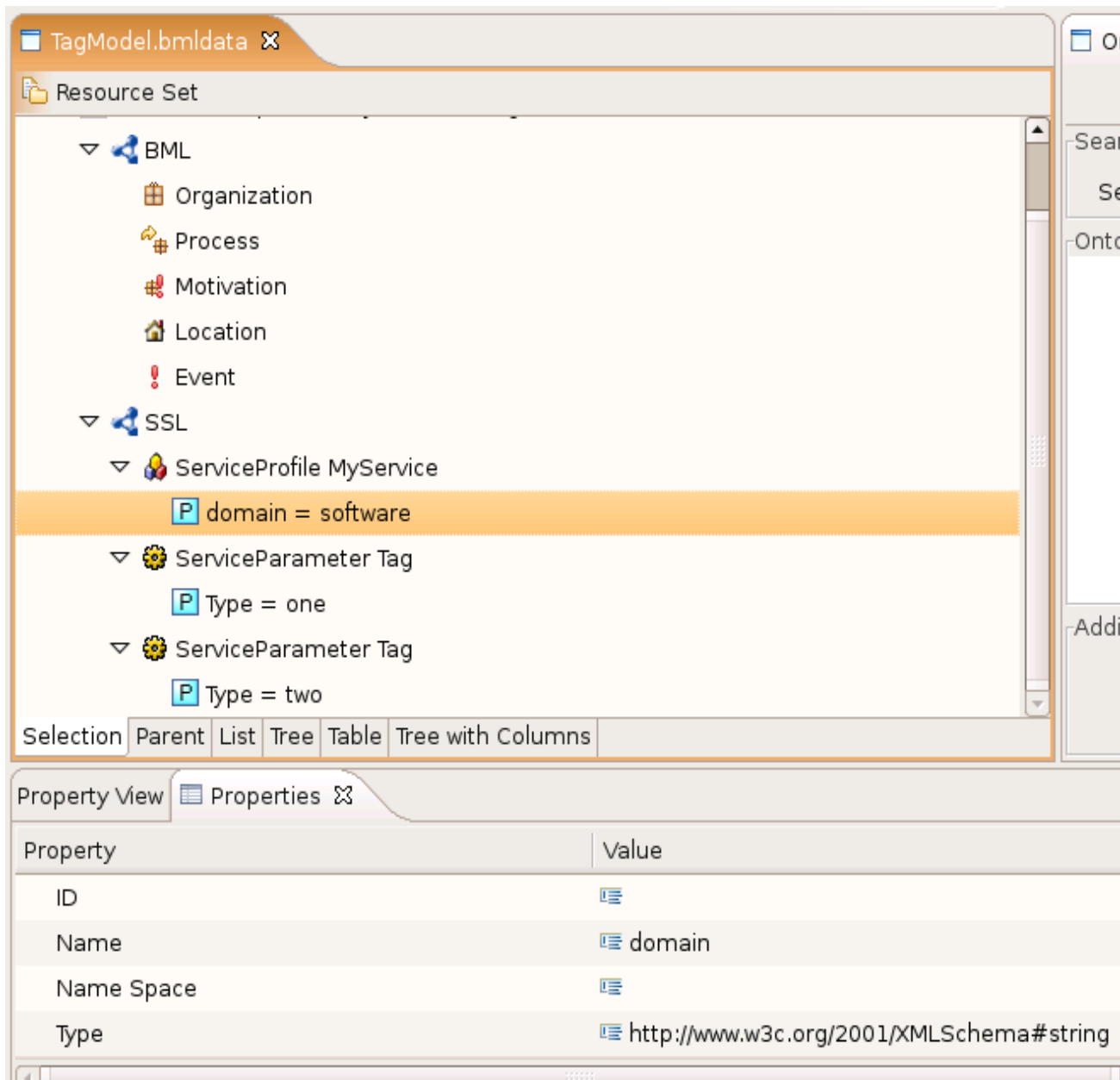
Right Click (or equivalent) will open up the context menu, where we can select “Duplicate” to create a new “ServiceParameter” concept.

You could use also the Standard commands such as “Copy/Paste” and or “Delete” to remove unwanted concepts

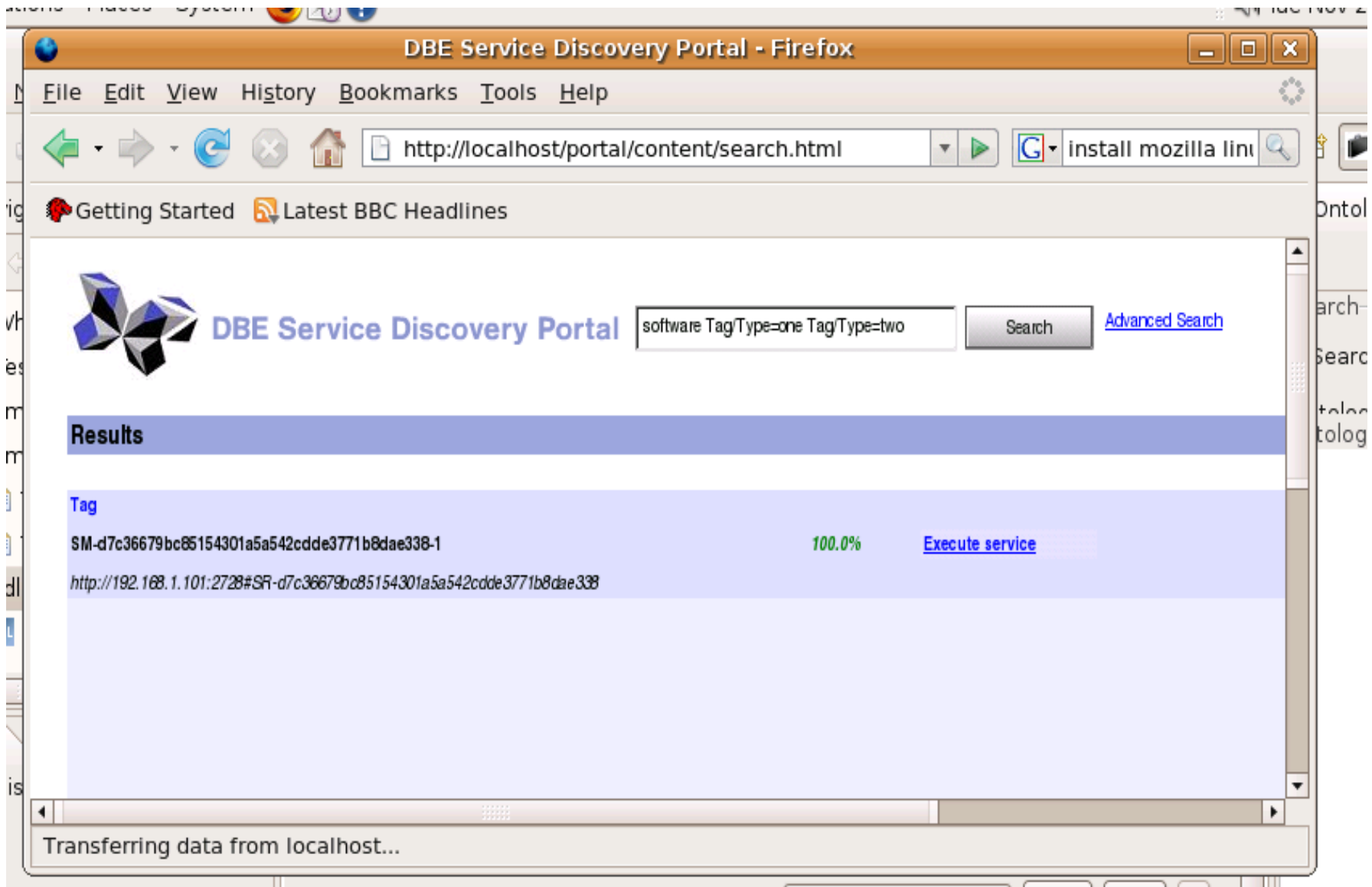


The BMLData M0 Model, showing the 2 ServiceParameter “Tag” newly created





The BMLData M0 Model, With the service data (i.e. *Type=one* in first *ServiceParameter* and *Type=two* in second *ServiceParameter*)



After the SM is deployed, we can then search for services using the Tagging mechanism

# Notes

- The purpose of this presentation is to show how to use basic BML to support a simple Tagging mechanism, and the BMLData editor “Duplicate” functionality
- The models and modelling is arbitrary, and does not represent the full potential of BML, such as the use of ontologies, or more complex models
- For more info contact:
  - victor <dot> bayon <at> digitalecosystem <dot> org
  - <http://dbestudio.sourceforge.net>
  - <http://swallow.sourceforge.net>
  - <http://www.digital-ecosystem.org>





This work is licensed under a [Creative Commons Attribution-NonCommercial-ShareAlike 2.5 License](https://creativecommons.org/licenses/by-nc-sa/2.5/).

