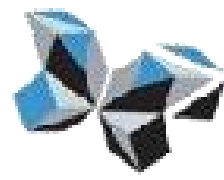


# Importing Ontologies into DBEStudio



- The DBEStudio, such as OWL-DL (or OWL- Description Logics) to be used in our BML models
- The import process is very simple and straightforward assuming that we have a valid OWL ontology!
- To illustrate the process, we have imported an OWL ontology inspired by the vCard specification [1]. The ontology has been created by Norman Walsh [2] which is available on his website [3].
- vCard is a popular “electronic business card” interchange format and it is widely used by some email clients.

# The process starts in an Ontology editor such as the fantastic Protégé Ontology Editor and Knowledge Acquisition [4].



File Edit Project OWL Code Tools Window Help

Metadata (vCard) OWLClasses Properties Individuals Forms

**SUBCLASS EXPLORER**  
For Project: vCard

Asserted Hierarchy

- owl:Thing
  - Address
  - Geo
  - Name
  - Organization
  - VCard

**CLASS EDITOR**  
For Class: Address (instance of owl:Class)

Property	Value
rdfs:comment	Resources that are vCard (postal) addresses.
rdfs:label	vCard Address Class

**Object properties**

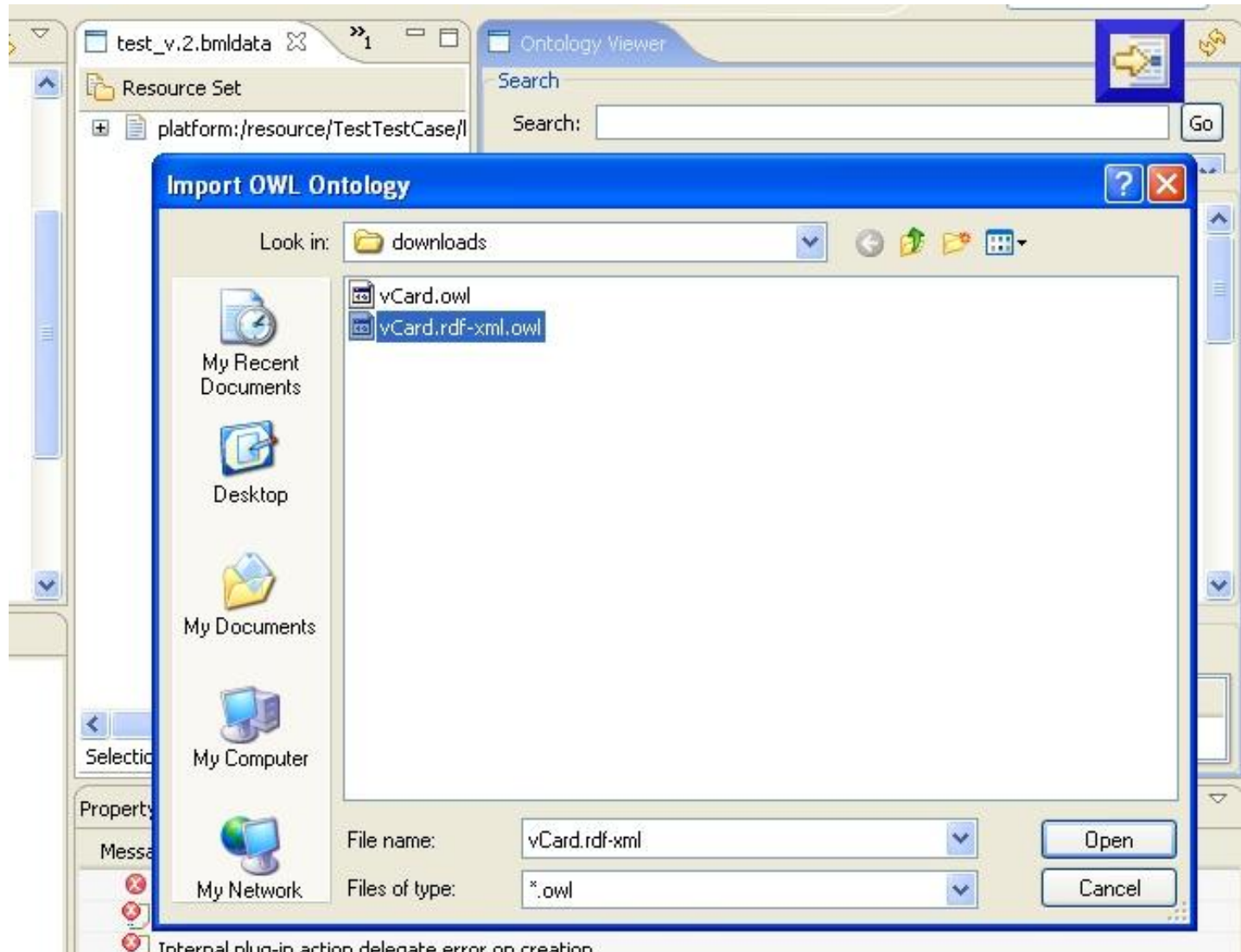
- adr
  - homeAdr
  - unlabeledAdr
  - workAdr
- agent
- email
  - mobileEmail
  - personalEmail
  - unlabeledEmail
  - workEmail
- geo
- key
- logo
- n

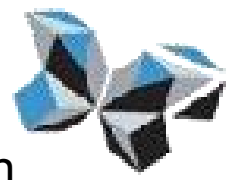
Property

Property	Value
rdfs:comment	A telephone
rdfs:label	phone

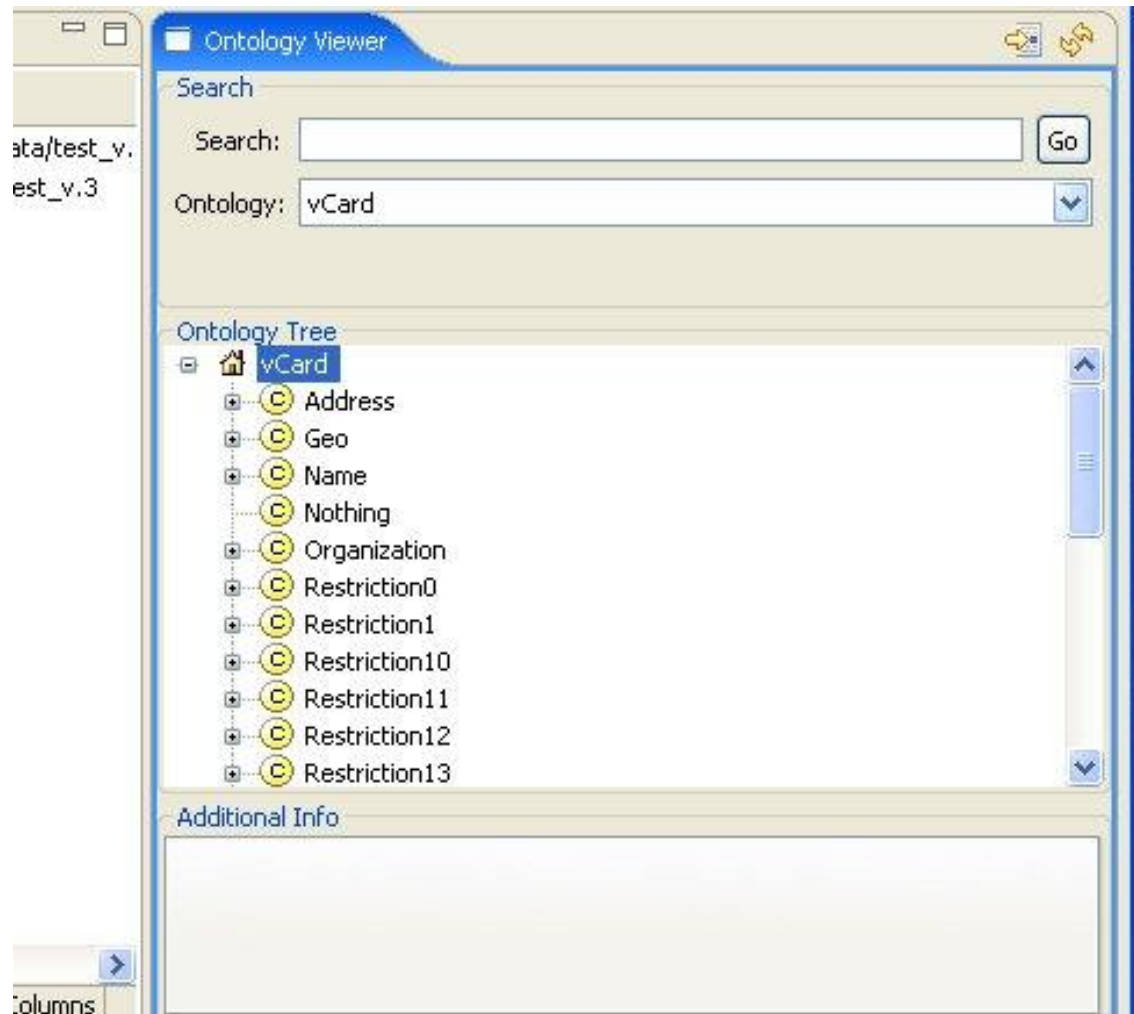
Domain: VCard

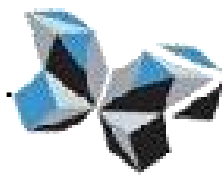
Once we have the ontology in OWL RDF format, we can then import it into DBEStudio. On the Ontology Viewer (i.e. BML Editor perspective), we can click on the “Import” button



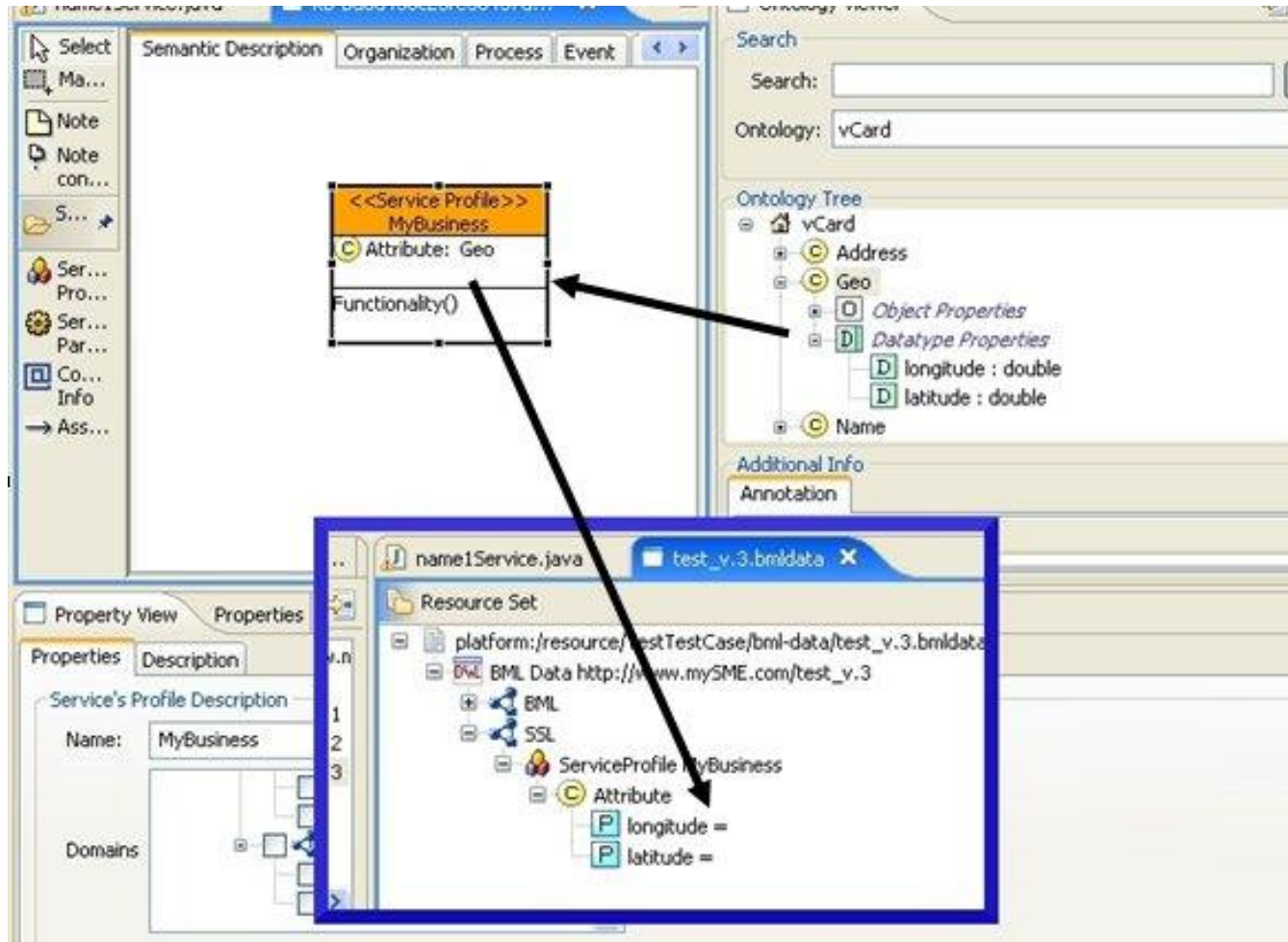


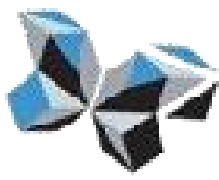
Once the Ontology-import process is finished, we must refresh the Ontology viewer (“Recycle”) and select the ontology (“Go”) button, in order to inspect the different classes imported



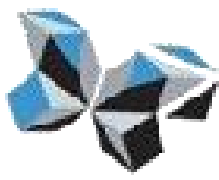


Then, we can create some BML Models where our Ontology can be re-used. The figure below illustrates a sample BML model with the Ontology in the Ontology Viewer (vCard), on a BML model reusing one of the Classes (Geo) and in the BMLData model with the attributes inherited from the vCard/Geo Classes/Properties/Datatypes.





- [1] <http://www.ietf.org/rfc/rfc2426.txt>
- [2] <http://norman.walsh.name/2005/12/12/vcard>
- [3] <http://nwalsh.com/rdf/vCard>
- [4] <http://protege.stanford.edu/>



This work is licensed under a [Creative Commons Attribution-NonCommercial-ShareAlike 2.5 License](https://creativecommons.org/licenses/by-nc-sa/2.5/).